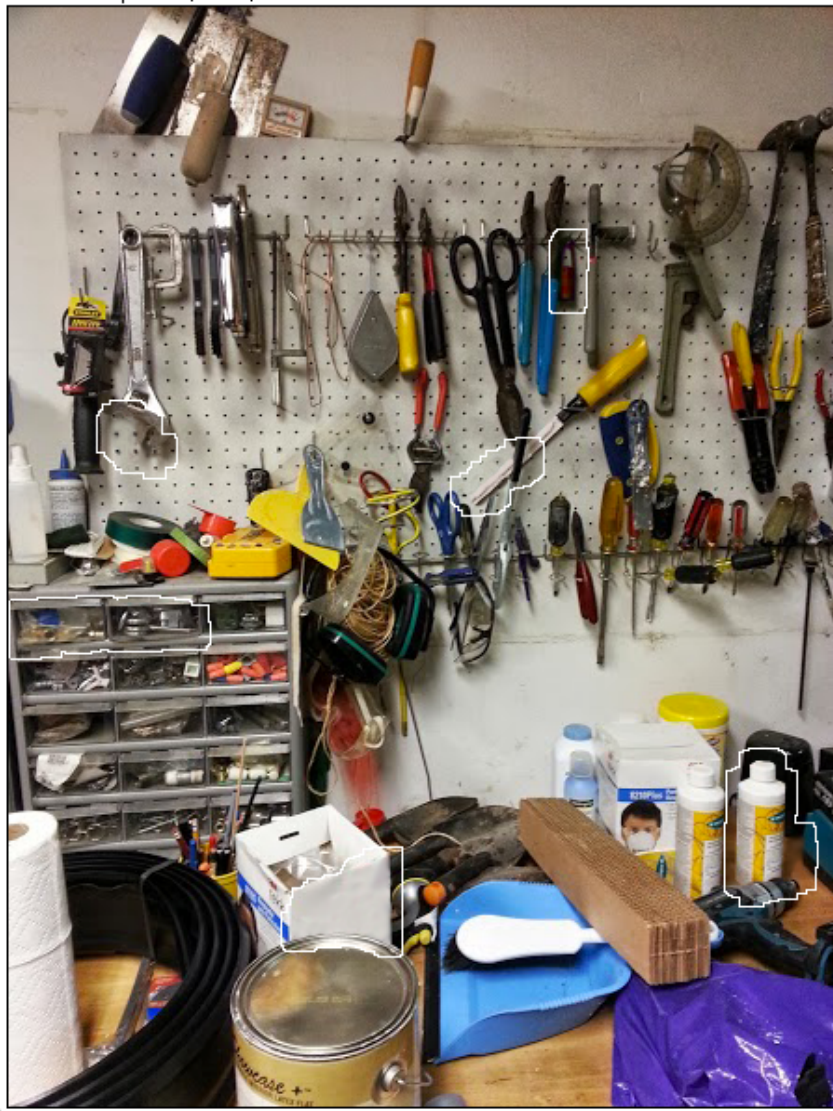


Remember to uncheck the “32-bit (float) result” box so that your resulting image comes out in color.

443x591 pixels; RGB; 1023K



It is much easier to see the differences when they are circled! Notice that the black part of the binary image did not appear when you added the two images together. This is because the black had a value of zero, and when you add a zero-valued pixel to another pixel it has no effect.